

Telescopic Cylinders

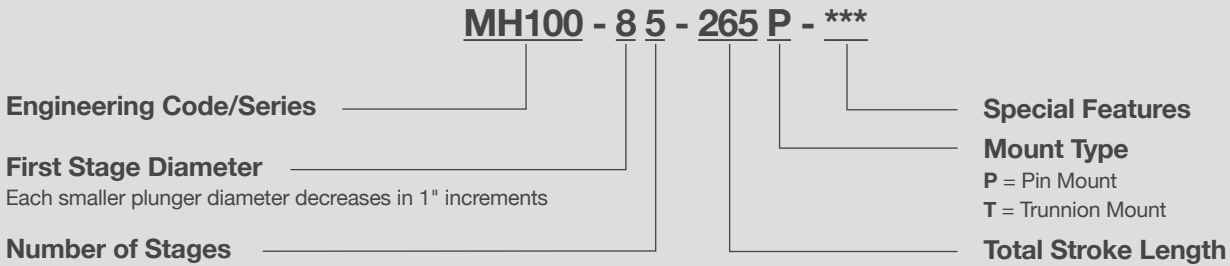
Reliable, Smooth Operating and Totally Interchangeable

- Single acting—pin mount & trunnion mount options
- Constructed from heat treated 1026 steel tubing
- Bleeder-less design (pin mount only)
- Re-designed piston assembly reduces air pocket
- All cylinder stages are chrome plated & roller burnished
- Dual retaining rings & dual nylon bearings
- Low friction dual lip rod seal



It's All in the Details

MODEL CODE BREAKDOWN

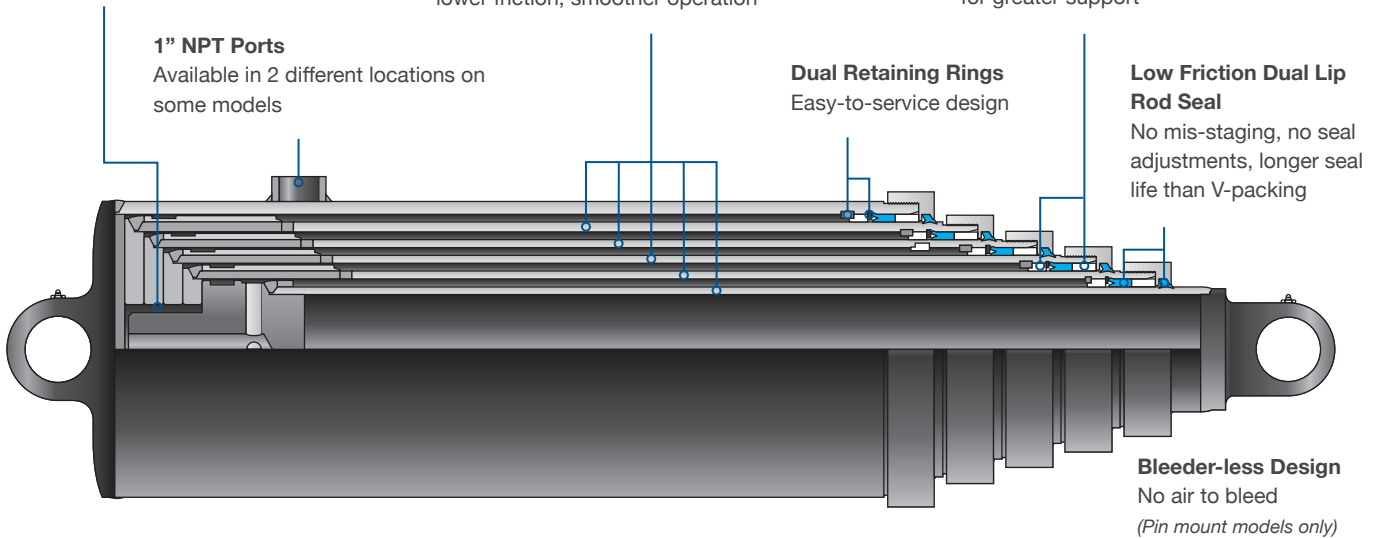


SPECS & BENEFITS

Redesigned Piston Assembly
Reduces air pocket at base of cylinder

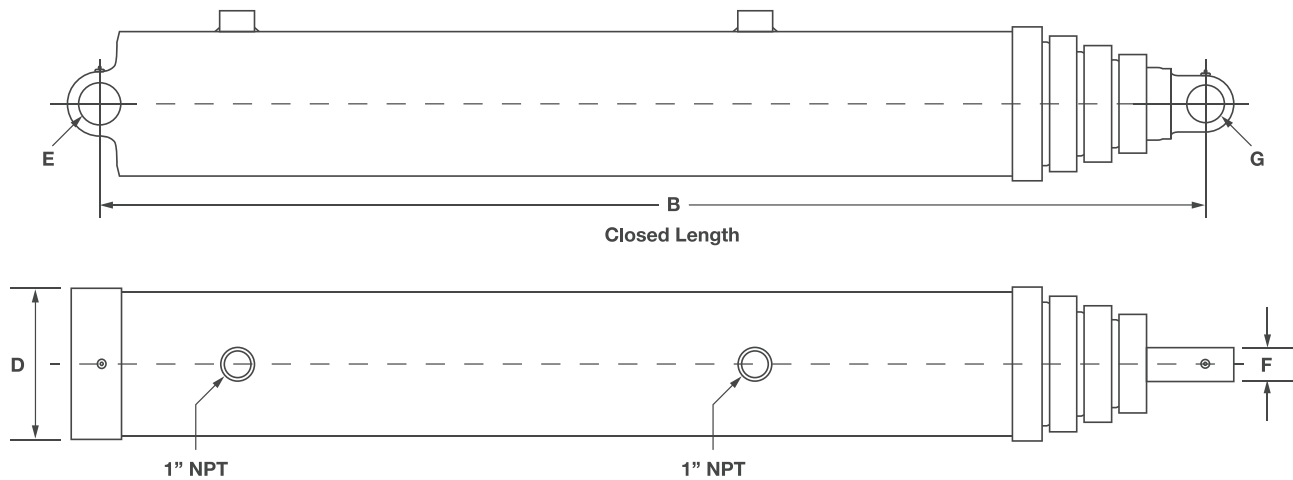
All Stages are Chrome Plated
Increases impact & scratch resistance, strength;
lower friction, smoother operation

Dual Nylon Bearings
More bearing surface area
for greater support



	GENUINE METARIS	PARKER®	CUSTOM HOIST®	MUNCIE®	HYCO®
Bleeder-less Design (not available in trunnion models)	✓	✓	✓	✓	-
Low Friction Dual Lip Rod Seal	✓	V-packing	V-packing	✓	✓
Dual nylon Bearings	✓	-	✓	✓	✓
Dual Retaining Rings	✓	-	Single retaining ring	-	✓
Chrome Plated Stages (All)	✓	-	-	-	-

Pin Mount Options

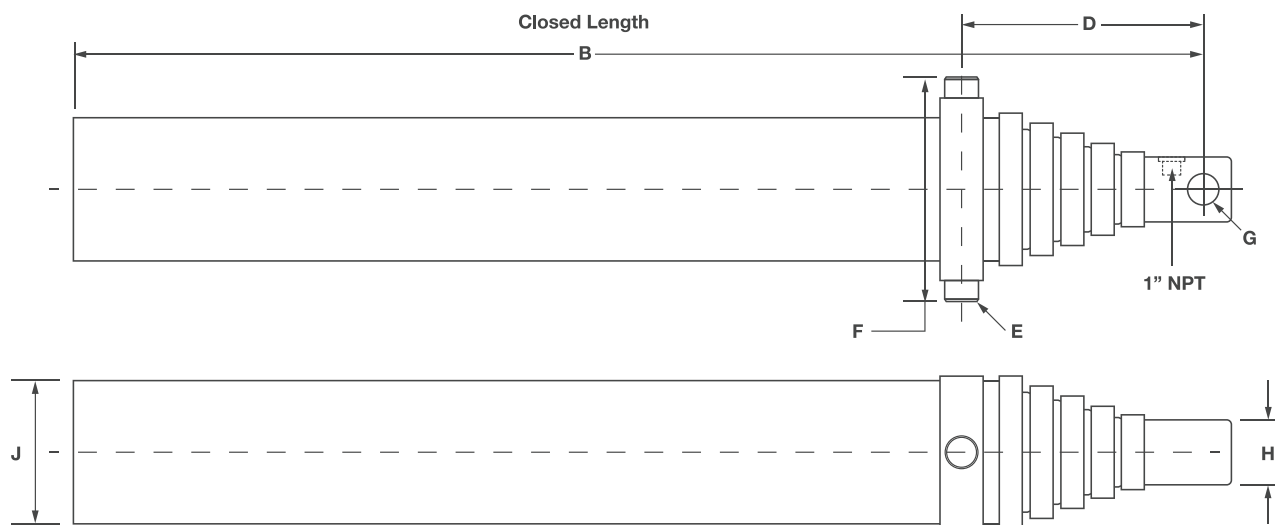


DIMENSIONS

Metaris #	Model Code	A Total Stroke Length	B Closed Length	C Extended Length	D Width of Base Eye	E Diam. of Base Pin Eye	F Width of Top Pin Eye	G Diam. of Top Pin Eye	Weight (lbs)
NW188395	MH100-53-84P	84	39 1/2	122 1/2	7	Fits a 2" Pin	2	Fits a 2" Pin	178
NW175402	MH100-53-126P	126	54 1/2	180 1/2	7	Fits a 2" Pin	2	Fits a 1 3/4" Pin	215
NW175397	MH100-63-108P	108	49 1/2	157 1/2	7 1/4	Fits a 2" Pin	2	Fits a 2" Pin	272
NW175398	MH100-63-120P	120	53 1/2	174 1/2	7 1/4	Fits a 2" Pin	2	Fits a 2" Pin	265
NW175399	MH100-63-126P	126	55 1/2	181 1/2	7 1/4	Fits a 2" Pin	2	Fits a 2" Pin	280
NW175400	MH100-63-132P	132	57 1/2	189 1/2	7 1/4	Fits a 2" Pin	2	Fits a 2" Pin	310
NW175401	MH100-63-140P	140	60	200	7 1/4	Fits a 2" Pin	2	Fits a 2" Pin	325
NW194642	MH100-73-120P	120	53 1/8	173 1/8	8 5/8	Fits a 2" Pin	2	Fits a 2" Pin	383
NW194643	MH100-73-124P	124	54 13/16	179 11/16	8 5/8	Fits a 2" Pin	2	Fits a 2" Pin	397
NW188244	MH100-64-135P-175	135	48 1/4	183	8	Fits a 1 3/4" Pin	2 3/4	Fits a 1 1/2" Pin	275
NW188245	MH100-64-156P-175	156	53 1/4	209 1/4	7 1/8	Fits a 1 3/4" Pin	2 3/4	Fits a 1 1/2" Pin	301
NW175396	MH100-64-156P	156	53 1/2	209 1/2	7 1/8	Fits a 2" Pin	2	Fits a 2" Pin	295
NW204030	MH100-64-168P	168	56 1/2	224 1/2	7 1/8	Fits a 2" Pin	2	Fits a 2" Pin	315
NW175394	MH100-74-135P	135	48 1/2	182 1/2	8 5/8	Fits a 2" Pin	2	Fits a 2" Pin	340
NW175395	MH100-74-156P	156	53 1/2	209 1/2	8 5/8	Fits a 2" Pin	2	Fits a 2" Pin	370
NW195410	MH100-74-180P	180	59 1/2	239 1/4	8 5/8	Fits a 2" Pin	2	Fits a 2" Pin	448
NW175389	MH100-85-190P	190	54	244	9 1/2	Fits a 2" Pin	2	Fits a 2" Pin	520
NW175390	MH100-85-220P	220	60	280	9 1/2	Fits a 2" Pin	2	Fits a 2" Pin	595
NW175391	MH100-85-235P	235	65	300	9 1/2	Fits a 2" Pin	2	Fits a 2" Pin	632
NW175392	MH100-85-250P	250	68	318	9 1/2	Fits a 2" Pin	2	Fits a 2" Pin	690
NW175393	MH100-85-265P	265	71	336	9 1/2	Fits a 2" Pin	2	Fits a 2" Pin	710

Sizes/Measurements are in inches rounded to nearest fraction - All cylinders are Single Acting and have a MAX Working Pressure of 2000psi

Trunnion Mount Options



DIMENSIONS

Metaris #	Model Code	A	B	C	D	E	F	G	H	J	Weight (lbs)
		Total Stroke Length	Closed Length	Extended Length	Eye/Trun. Length	Trun. Lug Diam.	Trun. Width	Diam. of Top Pin Eye	Width of Top Pin Eye	Diam. of Base	
NW188240	MH100-63-140T	140	60 1/2	200 1/2	14 1/2	1 3/4	12 1/2	Fits a 1 1/2" Pin	3.9	7	330
NW188241	MH100-85-235T	235	65 1/2	300 1/2	15 1/2	2 1/4	14	Fits a 2" Pin	3	9 1/2	695
NW188242	MH100-85-250T	250	68 1/2	318 1/2	15 1/2	2 1/4	14	Fits a 2" Pin	3	9 1/2	728
NW188243	MH100-85-265T	265	71 1/2	336 1/2	15 1/2	2 1/4	14	Fits a 2" Pin	3	9 1/2	757

Sizes/Measurements are in inches rounded to nearest fraction - All cylinders are Single Acting and have a MAX Working Pressure of 2000psi

Cross Reference List

Our MH series single acting telescopic cylinders are available in 3, 4 and 5 stage configurations and are fit, form and function interchangeable with other manufacturers such as: Hyco®, Parker® and Custom Hoist®.



METARIS	HYCO	PARKER	CUSTOM HOIST
MH100-53-84P*	70057-53-84*	S53DC-66-84*	53-4592-84
MH100-53-126P	70850-53-126E	S53DC-65-126	53-4531-130
MH100-63-108P	70347-63-108DE	S63DC-97-111	63-4402-108
MH100-63-120P	70347-63-120DE	S63DC-101-120	63-4402-120
MH100-63-126P	70347-63-126DE	S63DC-101-126	63-4402-126
MH100-63-132P	70347-63-132DE	-	63-4402-132
MH100-63-140P	70347-63-140E	S63DC-101-140	63-4402-140
MH100-73-120P	70195-73-120DE	S73DC-74-120	-
MH100-73-124P	70195-73-124DE	S73DC-66-124	-
MH100-64-135P-175	70470-64-132	S64DB-12-135	64-4435-135
MH100-64-156P-175	70854-64-156	S64DB-12-156	64-4435-156
MH100-64-156P	70347-64-156DE	S64DC-14-156	64-4467-156
MH100-64-168P	70894-64-168E	-	-
MH100-74-135P	70387-74-135DE	S74DC-74-135	74-4401-135
MH100-74-156P	70195-74-156DE	S74DC-74-156	74-4401-156
MH100-74-180P	71010-74-180D	S74DC-66-180	74-4401-180
MH100-85-190P	70000-815-180D	S85DC-66-190	85-4402-190
MH100-85-220P	70000-815-210D	S85DC-66-220	85-4402-220
MH100-85-235P	70000-815-235D	S85DC-66-235	85-4402-235
MH100-85-250P	70000-815-250D	S85DC-66-250	85-4402-250
MH100-85-265P	70000-815-265D	S85DC-66-265	85-4402-265
MH100-63-140T	70050-63-140T	S63MC-8-140	63-4582-140
MH100-85-235T	70060-815-235T	S85MC-48-235	85-4499-235
MH100-85-250T	70060-815-250T	S85MC-48-250	85-4499-250
MH100-85-265T	70060-815-265T	S85MC-48-265	85-4499-265



* Requires modification to the mounting eye. Please contact us on this model before ordering.